

## Supervision of Children or Home Alone Policy Per CAC Supplement to Army Regulation 608-18

**\*\* Children with a history of Attention Deficit Hyperactivity Disorder (ADHD), Attention Deficit Disorder (ADD), Developmental Delay, behavioral problems, impulsivity, psychiatric problems or other special needs should not be given the degree of self-management or responsibility allowed in this policy.**

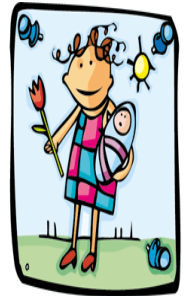
### HOME ALONE?

- Birth to 9 years old - NEVER
- Ages 10 & 11 - Can be left up to 2 hours with an emergency plan in place and access to an adult (NEVER overnight) but not dropped off at F&MWR without adult supervision
- Ages 12 to 14 - Up to 3 hours with an emergency plan in place and an adult checking on them in person or telephonically (NEVER overnight)
- Ages 15 to 17 - Up to 6 hours (NEVER overnight) with an emergency plan in place and access to an adult



### BABYSITTING?

- Birth to 11 years old - NEVER
- Ages 12 to 14 - Must have completed a CYS approved babysitting course. May babysit with an adult checking on them every 3 hours in person or telephonically (NEVER overnight)
- Ages 15 to 17 - Must have completed a CYS approved babysitting course. May babysit up to 6 hours with ready access to adult supervision (NEVER overnight)



### UNATTENDED IN VEHICLE?

- Birth to 9 years old - NEVER
- Ages 10 and older - Yes under normal weather conditions

### UNATTENDED OUTSIDE?

- Birth - 4 years - Direct supervision, NEVER LEFT ALONE
- Ages 5 to 6 - Immediate supervision, MUST be within eyesight or hearing distance from supervising adult with the ability to respond to an emergency in 30 seconds
- Ages 7 to 9 - Monitored supervision, If in a playground or yard access to adult supervision at all times
- Ages 10 & 11 - Self-care supervision up to 2 hours with access to adult supervision
- Ages 12 to 14 - Self-care supervision up to 3 hours
- Ages 15 to 17 - Self-care supervision up to 6 hours
- **Children 11 and under will not be dropped off at F&MWR activities without adult supervision per policy guidance.**
- Kindergarten must be accompanied by an adult to and from school
- 1<sup>st</sup> Grade and above - May walk to and from school and supervised activities alone
- During school year children 9 & younger must be escorted across heavy traffic roads (i.e., Grant, Hancock and Biddle)



### CURFEW (Children must be accounted for by a parent during the following time periods. )

- Ages 15 and younger is 2230-0600 hours.
- Ages 16 and 17 is 0030-0600 hours.

**Questions? Call Family Advocacy Program Manager (FAPM) at (913) 684-2822, Behavioral Health at (913) 684-6778 or Military Police at (913) 684-2111**

**\*\*For a complete Supervision of Children and Home Alone Post Policy please contact the FAPM.**